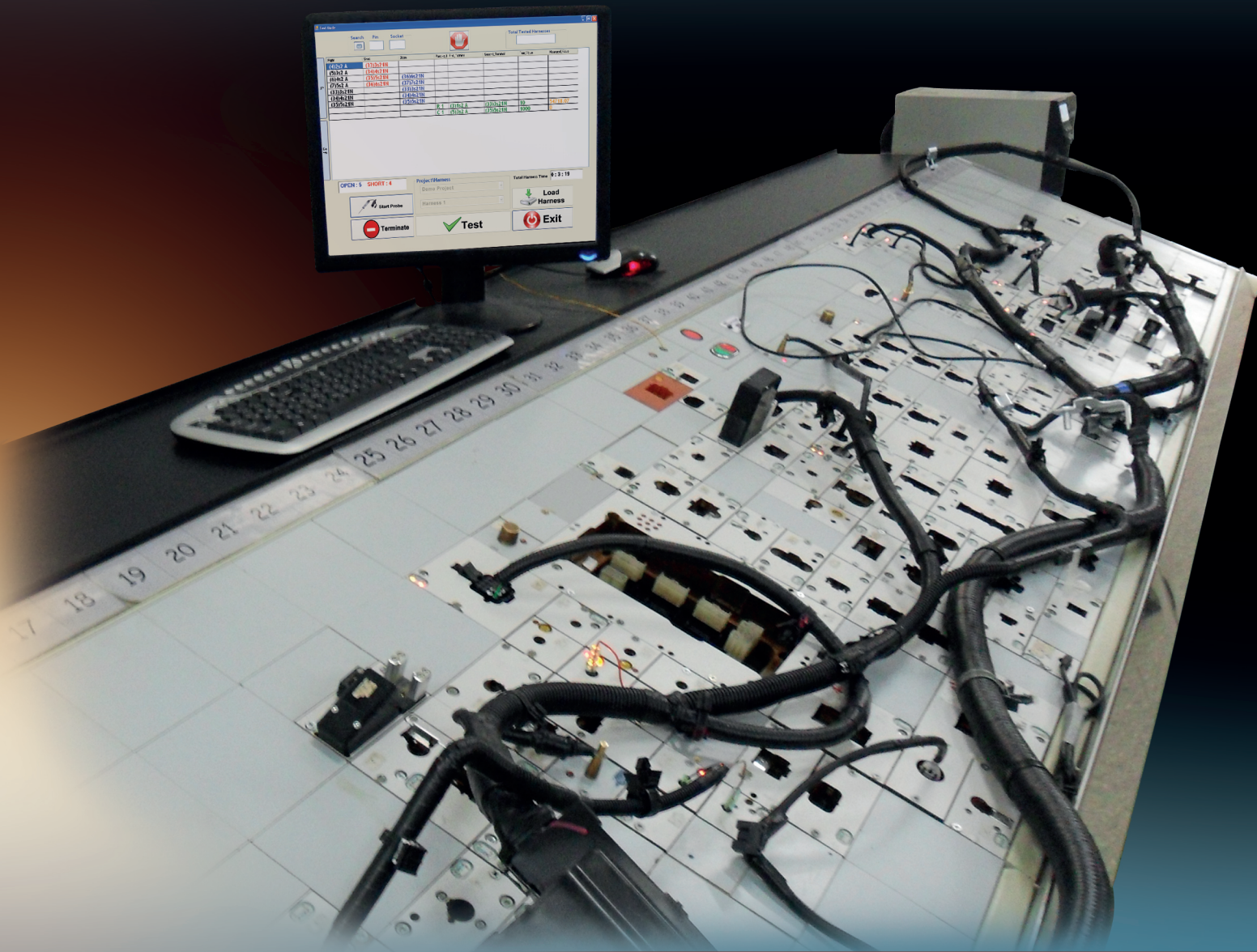


H - TESTER



Automatic Learning

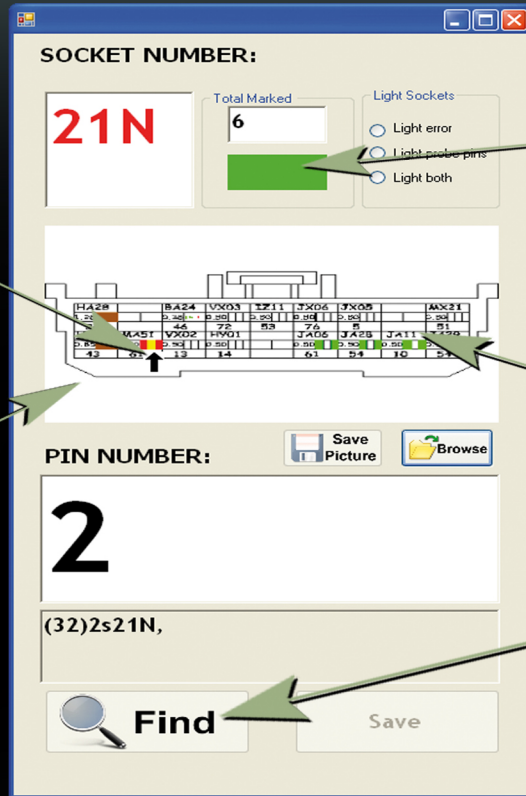
Real time testing

Socket pictures visualization

Pin positions visualization

Simple error detection

Simplifying Harnesses Testing



Selected pin

Socket Picture

Green means that the selected socket is included in the Running harness

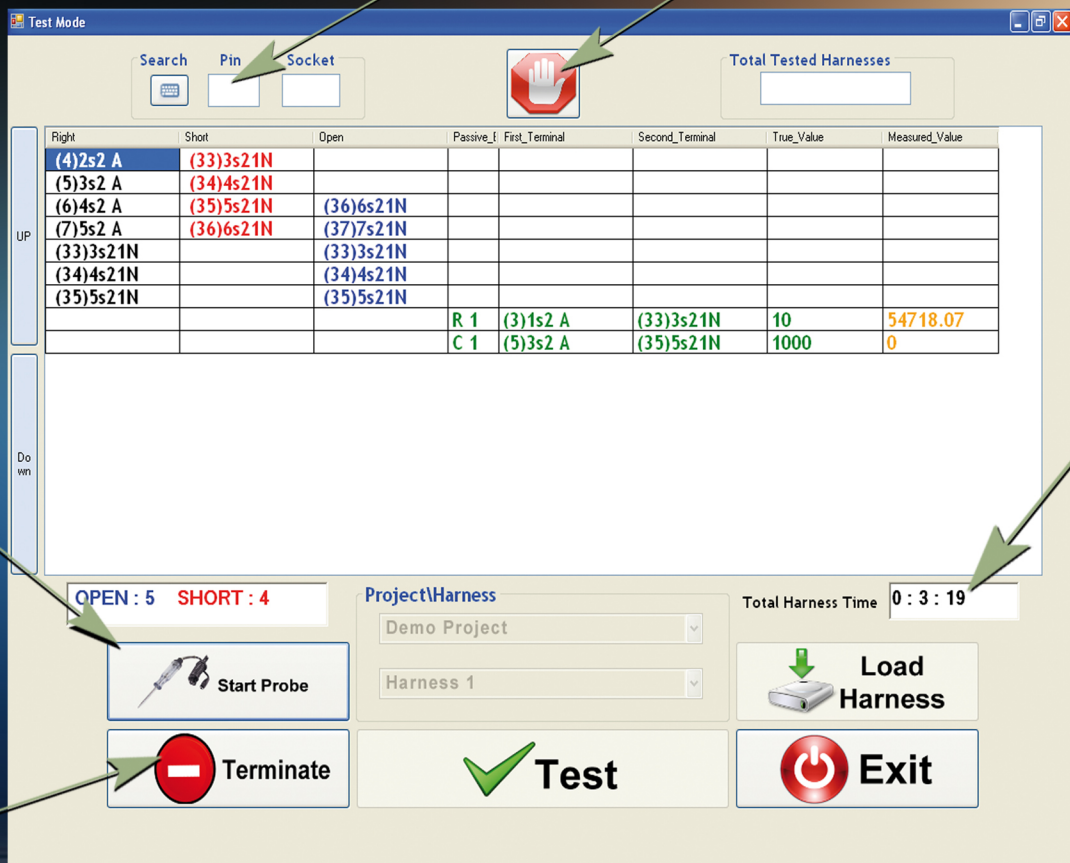
Red means that the selected socket is not included in the Running harness

Wires position and color

Socket searching

Searching

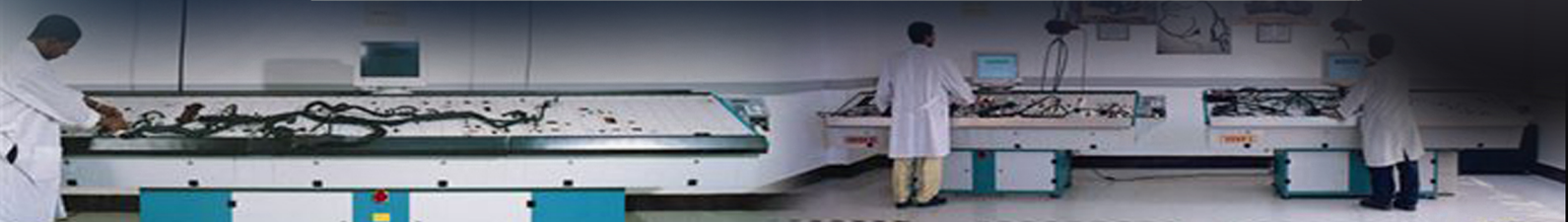
Real time testing Start/Stop



Starting Probe

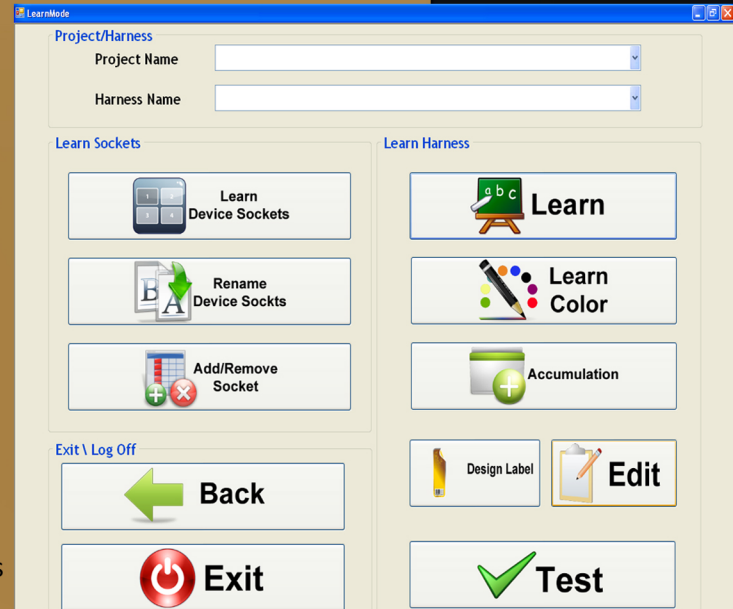
Testing time

Terminate test



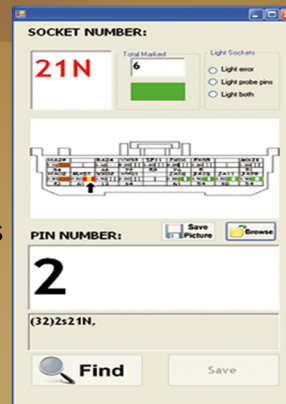
LEARN DESCRIPTION

- Automatic Learning for device sockets.
- Automatic detecting for passive element (Diode , Capacitor , Resistor).
- Accumulation Learning to add missing wires.
- Automatic Learning for harness wires.
- Easy wire's color learning.
- Easy socket's picture learning.
- Easy to edit harness's connections.
- The software automatically detect and stores the wire harness.



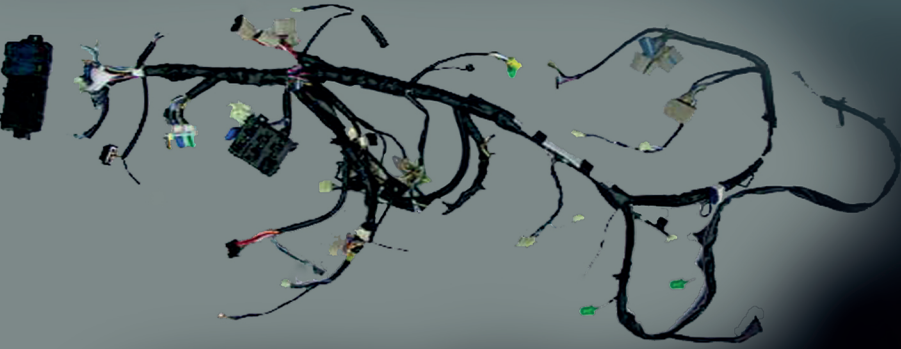
TEST DESCRIPTION

- Real time testing.
- Real time probe pin.
- Visualization of sockets pictures and pins positions when any pin probed.
- Simple error detection in harness.
- Show all errors in the harness at minimum number of rules (sophisticated effective algorithm).
- Easy to use and no need for experienced technicians.



TEST & MEASUREMENT PERFORMANCE

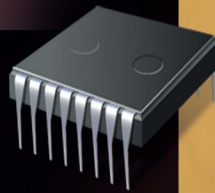
- Up to 32000 test points.
- Resistor Test from 1 Ohm to 1 MOhm ($\pm 3\%$).
- Capacitor Test from 50 nF to 1,000 μF ($\pm 3\%$).
- Diode Test for Open, Short and Reversed Insertion.
- Test diode direction.
- Test bus bars.



HARDWARE DESCRIPTION

LED Drivers

- 128 LED Drivers Per Card .
- Activates LEDs on an Assembly Board, Simultaneously with Associated Test Points .
- Aids in Visual Wiring Assembly and Fault Location .



Solenoid Driver

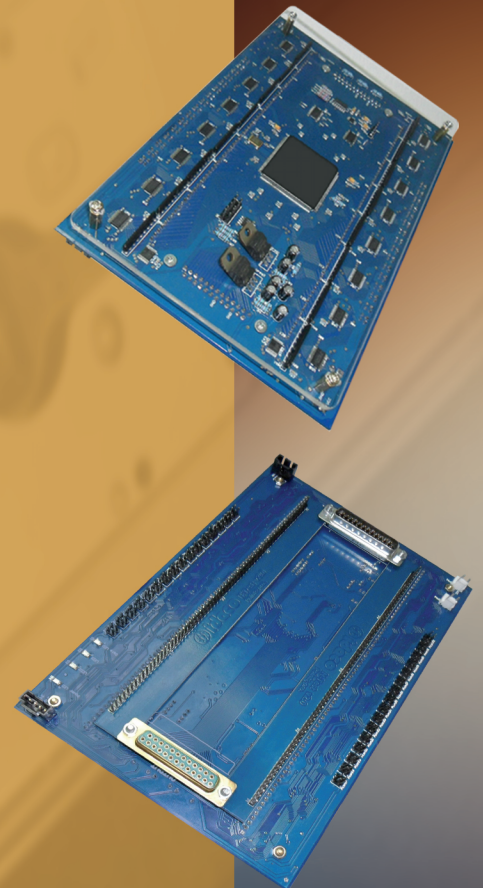
- 24 Solenoid Driver Per Card (12 , 24 or other voltages) .
- Programmable control for Solenoids while testing for purpose of push-back modules.

Hardware

- Cards connected to PC through PCI interface .

Card Dimensions

- 11.8 x 9.1 x 5.9 inches (W x D x H) .



Tel: (+20-2) 38 33 24 61 & (+20-2) 38 33 25 39

Fax : (+20-2) 38 33 24 60

Address : 3rd Industrial Zone – No. 243 / 17+250 – St. 36 – 6th October City - Egypt

P.O.Box : 61, Postal Code : 12566

Web site: www.idaco-egypt.com

Email: HTester@idaco-egypt.com