

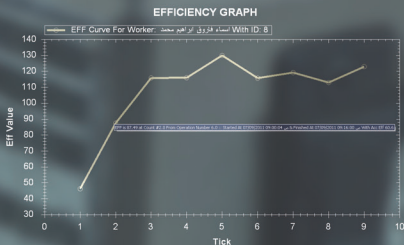
# ASC

Automatic Supervisor and Control System

## ASC System Description

ASC system applies method for monitoring in a real-time manner the efficiency and/or internal quality level of a company down to the level of individual tasks, the system comprises

- >>Applying automatic supervisor concept as if the organization has hired an industrial engineer for each production and quality worker.
- >>Giving organization management full control on all workers and employees.
- >>Applying new concept for monitoring the efficiency & PPM of an organization and down to the level of Departments, Groups and Workers.
- >>Building communication system between all workers and their managers.
- >>Giving each worker Real time feedbacks of salary, efficiency, PPM, error counter, revised counter, operation standard time and other needed parameters.
- >>Generating some useful statistics which guide the management to take correct decisions like statistics about stoppages or operations errors.
- >>Generate an atmosphere of competition between the workers
- >>Helping the worker to fine tune his performance by giving him a second by second feedback about his performance level.
- >>Maximizing the team work spirit.



# Features and Specifications



- 1-User name and password for each user.
- 2-Departments contain several groups which can be defined by administrator.
- 3-More than one user can work on a single ASC unit.
- 4-A supervisor master password with a predefined privileges for resetting a group of users.
- 5-No worker is allowed to be in more than one place at a time.



- 6-Real time performance monitoring.
- 7-Real time short instruction sending for a worker, a group and a department or the entire organization.



- 8-Standard time derivation for operations ,based on a group of workers under experiment using statistical analysis.
- 9-A detailed real time, daily, weekly, monthly or on whatever period required report for a worker, a group ,a department or the entire organization performance.
- 10-Report for stoppage time and causes of stoppage according to a predefined list of Stoppages which can bring out the cause of any stoppage and who is responsible for it.
- 11-History keeping.



- 12-Importing and exporting from excel minimizing startup data uploading time.
- 13-Many custom circuits can be connected to the ASC through the existing interface socket for controlling and monitoring external devices or sensors.
- 14-Servers can be cascaded and the only boundary is the capacity of the network.
- 15-As simple as connecting a PC to the LAN.
- 16-Stand alone units with separate power supply.
- 17-A sound buzzer for error reporting.
- 18-Green and Red LED for visual performance feedback.
- 19-2 LEDs for system and network errors reporting.
- 20-Oracle D/B engine based environment.
- 21-Barcode reader for data Entry.
- 22-ASC Client Application Workers Location Monitoring.



# Smart Software

Monitoring your Company from anywhere

ASC sends real time feedback to the connected worker like:

- Current Efficiency.
- Accumulation Efficiency.
- Quality revised counter.
- Error Counter.
- PPM.
- Bonus Salary.
- Led Indicator (red or green).
- Posted Counter.
- Worker Rank.
- Count down timer.

The screenshot shows a worker's dashboard with the following data:

- Current Efficiency:** 105.64
- Accumulative Efficiency:** 114.96
- Current PPM:** 90909.1
- Accumulative PPM Over Period:** 113.5
- Quality Test:** 33
- Accumulative PPM Over Period:** 0.0
- Worker Rank:** 3/33
- Total Stoppage:** 6:22:39
- OP Act Times:** 0:13:11

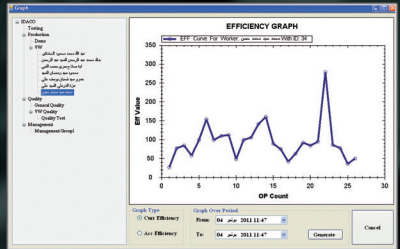
Detect Specific Parameters for each Worker

- Start time of working.
- End time of working.
- Number of completed operations.
- Details about each cycle.
- Accumulation Efficiency.
- Active Shift.

- Expected output related to the shift time.
- Has over time or not.
- Available breaks related to the shift time.
- Total stoppages (Breaks or Maintenances) taken by the worker.

## ASC System gives user the ability to generate Worker Efficiency Graph:

On Specific Period: where the system will generate graph containing each day and accumulation efficiency at this day.  
 In Specific Day: where the system will generate graph containing information about each cycle in this day (cycle and current or accumulation efficiency at this cycle according to the user selection).



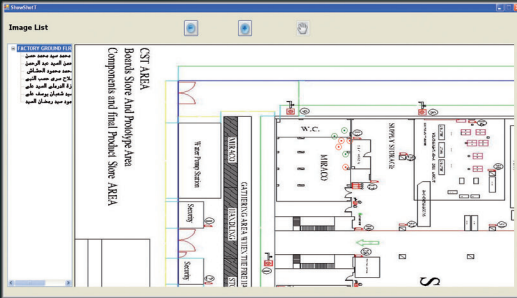
WORKER_ID	WORKER_NAME	OP_ID	OP_NAME	OP_STD_TIME	OP_CYC
13	محمد سعيد رمضان السيد	10	PL3BA	0:5:37	1
14	محمد سعيد رمضان السيد	10	PL3BA	0:5:37	2
14	محمد سعيد رمضان السيد	10	PL3BA	0:5:37	3
14	محمد سعيد رمضان السيد	10	PL3BA	0:5:37	4
14	محمد سعيد رمضان السيد	10	PL3BA	0:5:37	5
14	محمد سعيد رمضان السيد	10	PL3BA	0:5:37	6
14	محمد سعيد رمضان السيد	10	PL3BA	0:5:37	7
14	محمد سعيد رمضان السيد	10	PL3BA	0:5:37	8
14	محمد سعيد رمضان السيد	10	PL3BA	0:5:37	9
14	محمد سعيد رمضان السيد	10	PL3BA	0:5:37	10

## ASC System Supports History Analysis in specific period for:

- Stoppages (Breaks or Maintenances) occur in this period by W or G or D or O.
- Errors occur in this period by W or G or D or O.
- Accumulation Efficiency in this period for W or G or D or O.
- Detailed Efficiency for all cycles in this period for W or G or D or O.
- Workers Logging in and off details in this period.
- System Errors (Log File).

# Streamline your production process

## Improve Quality and Performance



ASC System gives you the ability to track the worker movement inside the organization departments

Green Led (High Eff.)      Red Led (Low Eff.)

Toggle List

Current Counter

List of Workers IDs

Stop Working

Smile face

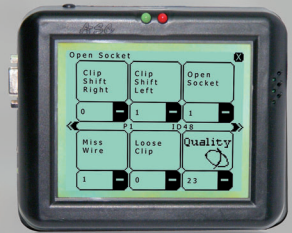
High Eff.

Normal Eff.

Low Eff.

Posting Mode:      Count Down Timer

Validate worker's counter      represents the standard time for the current operation



### Toggle List contains:

Current Efficiency, PPM, Error Counter, Revised Counter, Posting Counter, Bonus Salary and Worker Rank.

### Posting:

Validate actual produced counter by the worker



Tel: (+20-2) 38 33 24 61

(+20-2) 38 33 25 39

Fax : (+20-2) 38 33 24 60

Address : 3rd Industrial Zone - No. 243 / 17+250 - St. 36 - 6th October City - Egypt

P.O.Box : 61,

Postal Code : 12566

Web site: [www.idaco-egypt.com](http://www.idaco-egypt.com)

Email: [asc@idaco-egypt.com](mailto:asc@idaco-egypt.com)